



# GAT MONTHLY MEMBERSHIP PROGRESS REPORT

Results as of: 10/31/2022

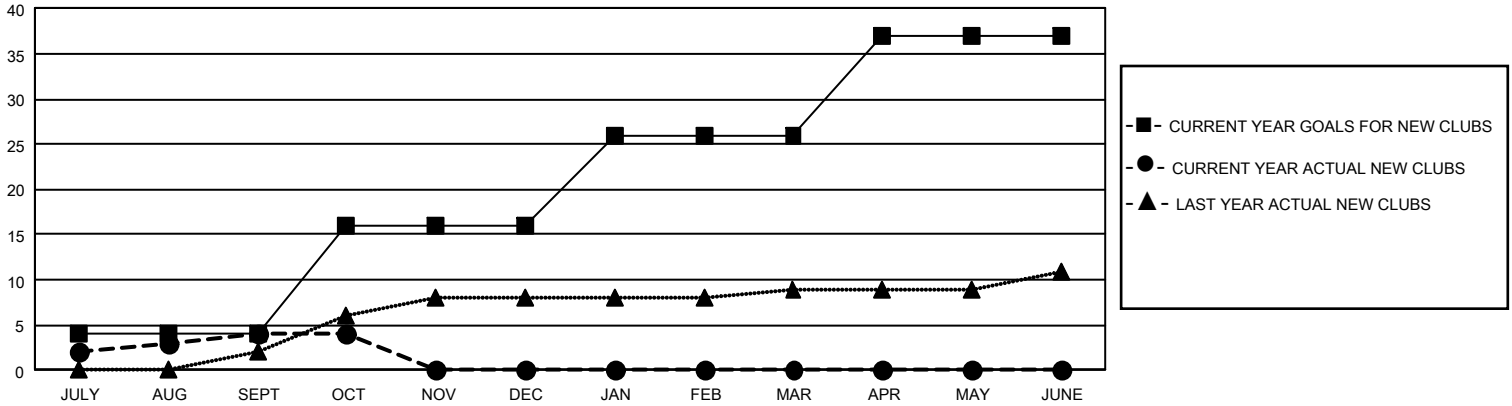
## GAT Constitutional Area 2

REPORT DOES NOT INCLUDE CLUBS IN UNDISTRICTED AREAS.

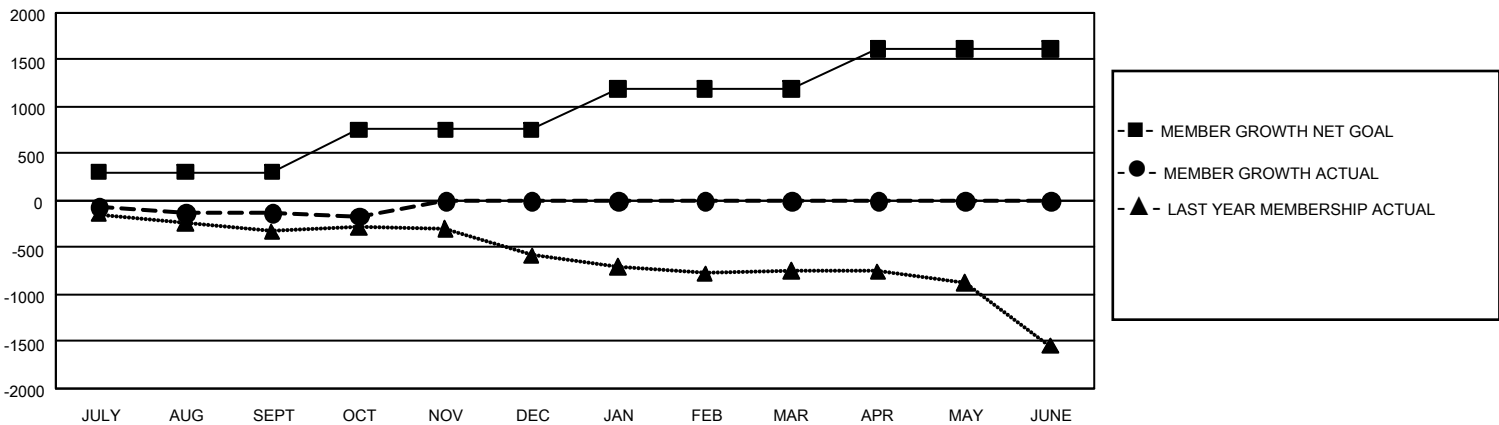
Clubs			
RESULTS FOR 2022-2023			
QUARTER	NEW CLUB GOAL	NEW CLUBS	DROPPED CLUBS
JULY/AUG/SEPT	12	4	5
OCT/NOV/DEC	36	0	1
JAN/FEB/MAR	30	0	0
APR/MAY/JUNE	33	0	0

Members			
RESULTS FOR 2022-2023			
QUARTER	MEMBER GROWTH NET GOAL	MEMBER GROWTH ACTUAL	DROPPED MEMBERS ACTUAL (including transfers)
JULY/AUG/SEPT	306	618	652
OCT/NOV/DEC	450	347	336
JAN/FEB/MAR	438	0	0
APR/MAY/JUNE	426	0	0

GOALS AND ACTUAL NEW CLUBS CUMULATIVE



GOALS AND ACTUAL MEMBERS CUMULATIVE



DROPPED CLUBS: 6	
<b>DROPPED MEMBERS</b>	
DECEASED	140
CLUB CANCELLED	22
OTHER	826
<b>TOTAL</b>	<b>988</b>

297 CLUBS OF 1,252 ADDED 1 OR MORE NEW MEMBERS

[CLICK HERE FOR CUMULATIVE MEMBERSHIP DATA](#)

GENDER DISTRIBUTION	
MALE	17,575 (65.70%)
FEMALE	9,173 (34.29%)
NON BINARY	1 (0.00%)
PREFER NOT TO ANSWER	1 (0.00%)
TOTAL FAMILY UNIT MEMBERS	4,803
FAMILY MEMBERS PAYING HALF DUES	2,467